

SPECIFICATION

产品规格书

Item No.

产品型号: KTSL2201-50W

Description.

产品描述: LED Solar Street Light

Spec. No.

规格书编号: KTSS-C

DATE:

制作日期: 2018-01-18

PREPARED 制 作	FREVIEW 初 审	CHECKED 审 核	CHECKED 复 核

LED Solar street light Advantage(LED 太阳能路灯的优势):

- 1) Light Source: We choose high quality Philips or Cree 1W LED.
(光源:我们选择优质 PHILIPS 或 CREE 1 W LED。)
- 2) Special accessories to make it up to IP65 suitable for "Wet Areas" application;
(特殊配件,使其达到 IP65 适合“湿区”应用程序;)
- 3) High brightness, stable performance, long life span, widely used ,low power consumption, energy savings and environmental protection
(亮度高,性能稳定,寿命长,广泛应用,低功耗,节约能源和环境保护)
- 4) Resistant to corrosion, Thermal, shock resistant tempered high lumen lens
(耐腐蚀、热、耐冲击高流明透镜)
- 5) stainless steel screws to be easy to maintain.
(不锈钢螺旋不锈钢螺丝容易维护。)
- 6) Weatherproof and durable silicon rubber sealing gasket
(防水和持久的硅橡胶密封垫片)
- 7) Instant start, no flickering, Ideal for frequent switching, voltage fluctuation range of big occasions .
(即时启动,没有闪烁,适合频繁开关,电压波动范围大的场所)
- 8) Half power discharging time 40 hours, full power discharging time 20 hours.
(半功率放电时间 40 小时 , 全功率放电时间 20 小时)



Specification(产品说明) :

Electric Parameter(电气参数)		
1	Item Number (产品基本型号)	KTSL2201-50W
2	Power Consumption(灯具功率)/W	50W
3	Energy efficiency index(能效指数)	0.239
4	Energy efficiency level(能效等级)	A
5	Start Time(启动时间)	< 500mS
6	Maximum duty cycle(最大导通占空比)	< 0.8
7	Short Circuit Protection(是否有短路保护)	Yes
8	Open Circuit Protection(是否有开路保护)	Yes
9	Reverse Polarity Protection (是否有反接保护)	Yes
10	Temperature Protection (是否有过热保护及临界点温度)	Yes
11	Safety Grade(灯具安全等级)	Class II
Optics Parameter(光学参数)		

1	LED	Origin (芯片产地)	CHINA	
		LED Bright (单颗 LED 亮度)	LMM/led for White@ 350mA	
		LED Color Temperature (色温) /K	6000±355K	2825±145K
		CRI (显色指数)	≥80%	≥70%
2	Lamp	LED Packing type(LED 封装类型及数量)	SMD100PCS	
3		Current / Whole lamp (整灯电流) /mA	280-1500mA	
4		Initial Light Efficiency(初始光效)/LM/W	120LM\W±10%	
5		Beam Angle(发光角度)	70°*140°	
6		solar panels(太阳能板)	18V/70W	
7		Battery(电池)	12V/32AH	
8		Lamp	1000 hours Light failure rate(1000 小时光衰率)	< 5% @ 25°C
Structure parameters(结构参数)				
1	Lamp body type(灯具类型)		LED Solar street light	
2	Sheel Structure material(外壳结构材料)		ALUMINUM BODY	
3	INTERNATIONAL PROTECTION(防护等级)		IP65	

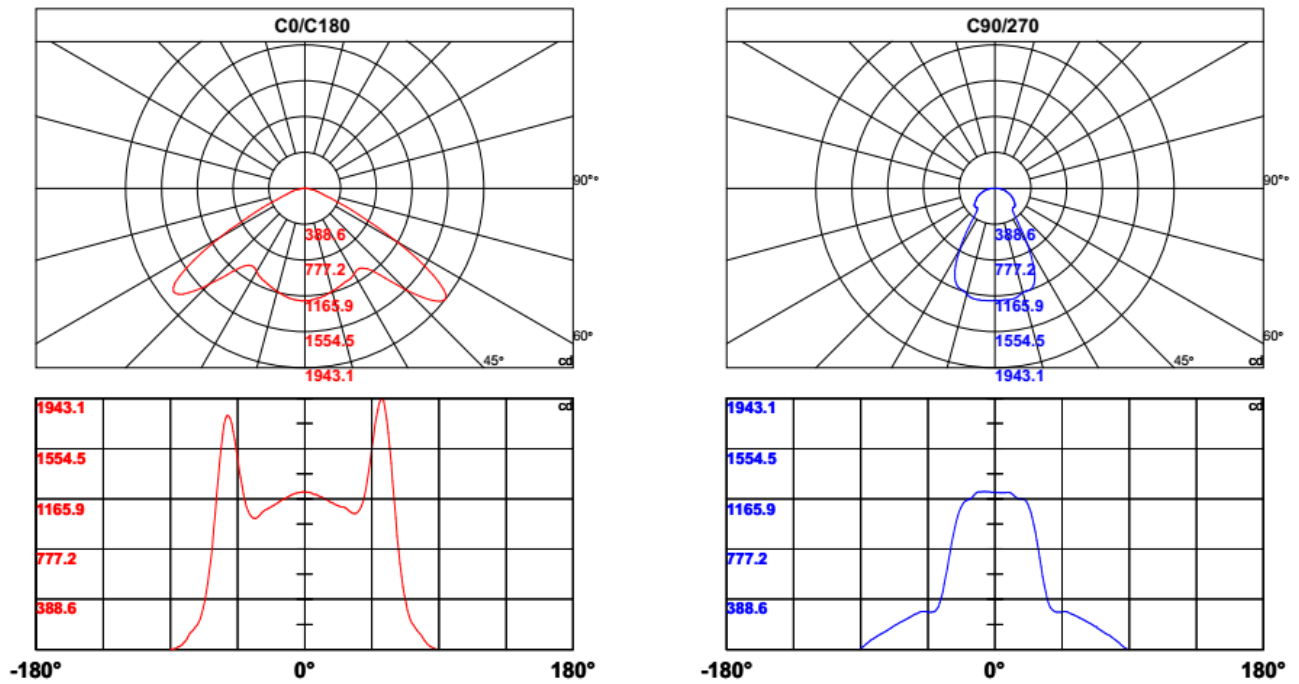
* The lifespan will change according to the working temperature and working hours per day (灯具使用寿命将随工作环境温度及每次工作时长而变化) .

* Dongguan Aladinled Lighting Tech., co., ltd reserves the right to improve the design details and materials as necessary. (本公司会根据实际需要来改变设计或材料以提升产品性能.)

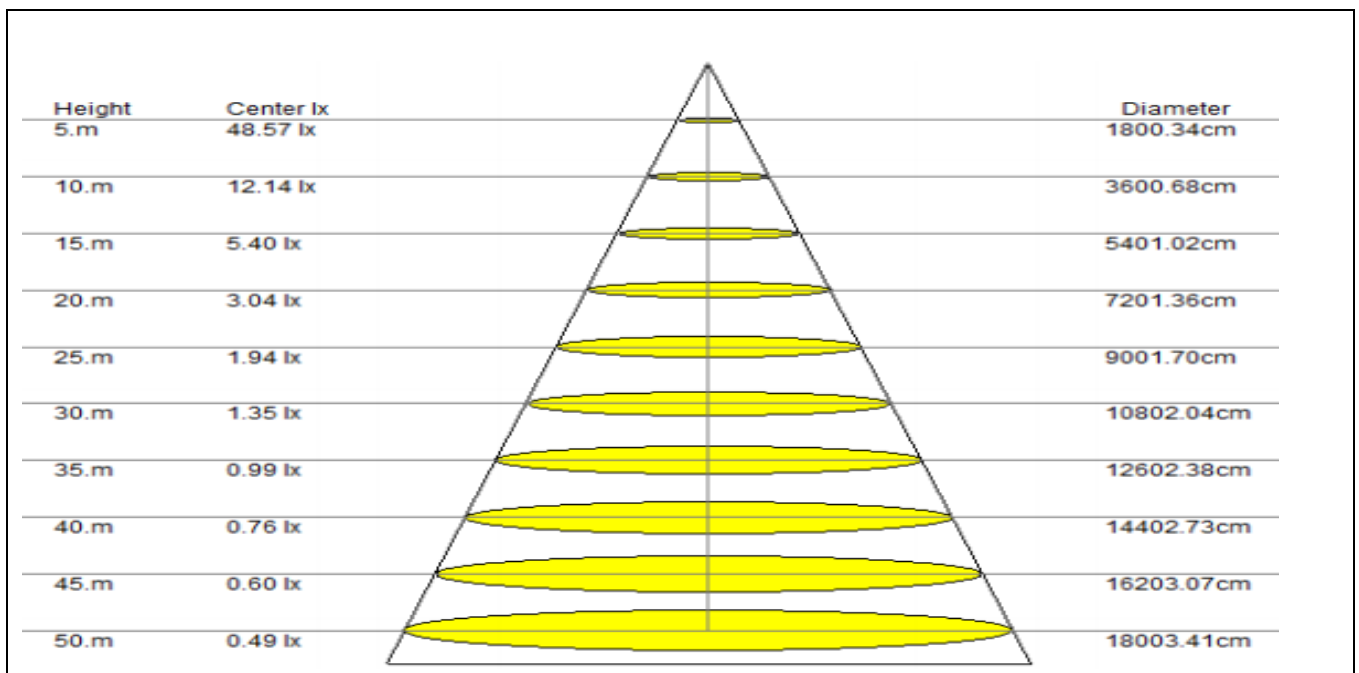
* The above data are the testing data measured by ALADINLED' s instrument. (以上数据是通晶仪器测量的数据.)

* These data are testing data of representative products available for customer reference. (这些数据是代表性产品测出来可供客户参考的数据.)

The photometric results(光度结果) :



Illuminance-distance curve(照度距离图) :



Product Size (产品尺寸):



Packing (产品包装):

Item No. 型号	Wattage 瓦数	Carton Size 包装尺寸	NW 净重	Carton G.W 一箱毛重	Carton/pcs 一箱数量
KTSL2201-50W	50W	123*35*18cm	13.5Kg/pcs	14.5Kg/carton	1

temperature(色温):

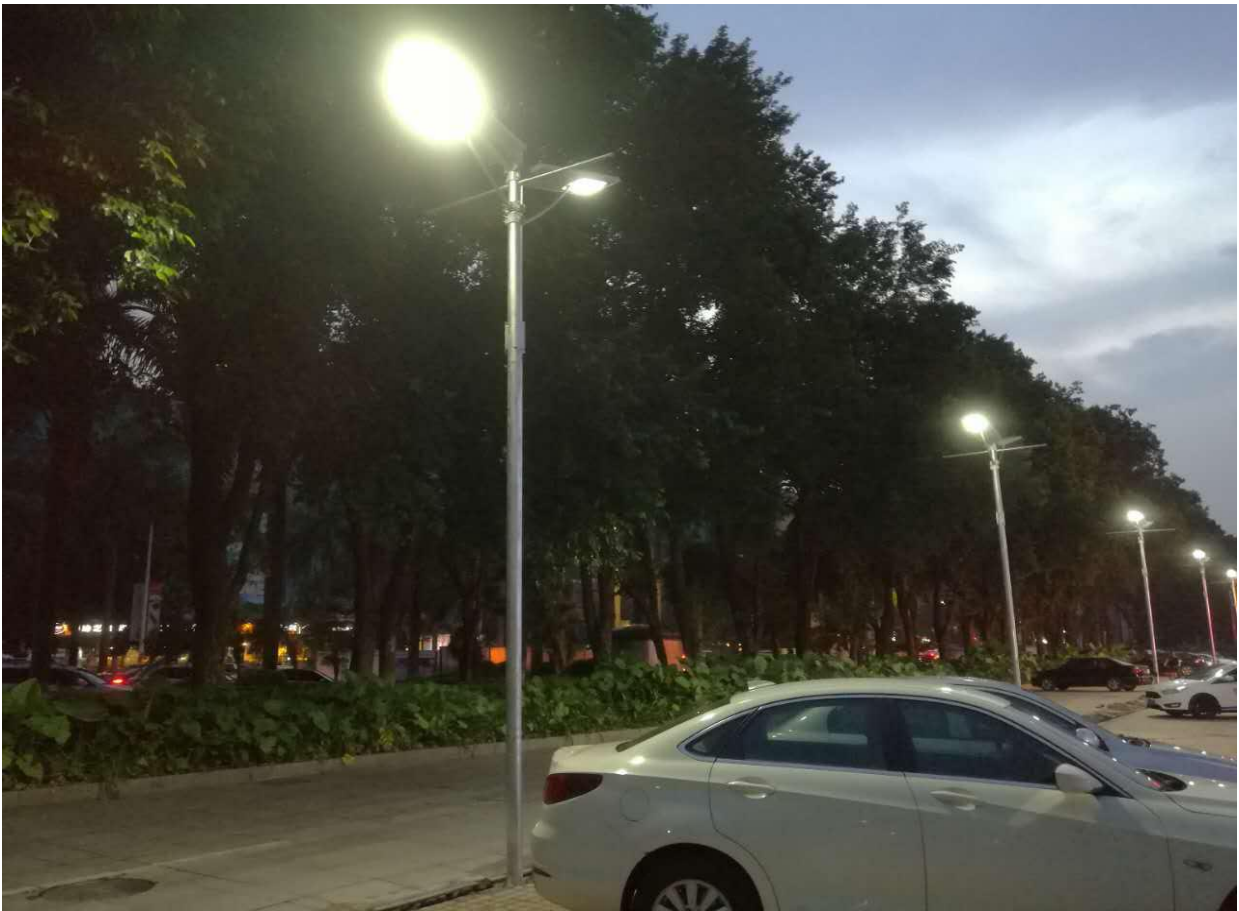


WW 【2700K-3200K】



W 【6000K-6500K】

Application(产品应用示例图):



ATTENTION(注意)



- ◆ Do not hit or beat the lamp forcibly(不要强制性敲打或撞击灯具).
- ◆ Do not work with dimmer switch (不可调光,勿与调光器一起使用).
- ◆ No sundries around, no cover on the lamp due to heat sinking concern
(为了不影响灯具的散热,请不要在灯具的周围堆放杂物或者盖住灯具,请保证灯具的良好散热环境).

WARNING(警告)

- ◆ Please check before installation that the LED light input voltage fits to the voltage showed on the box or lamps. (请在安装前检查灯具的输入电压与包装盒或灯具上标示的电压一致).
- ◆ Please install the lamp at the suitable place. (请把灯具安装在合适的地方).
- ◆ Make sure the light is powered off when you install or clean this lamps(安装和清洁灯具时必须确保已切断电源).
- ◆ For cleaning only use a dry, soft cloth; never use chemicals or water(清洁灯具只能用柔软的干布,不可使用其他化学物质和水).
- ◆ Do not touch the LED light when it is switched on (请勿触摸或接触正常工作中的灯具).
- ◆ Do not store or use this product in places with high temperature or high humidity(不要在高温或高湿度的地方存放或使用本产品).
- ◆ Do not open the lamp, please ask the specific operation to repair if need.
(不要私自打开灯具,如需维修必须由专业人员进行操作).
- ◆ No guarantee claims for the unit and no liability for any resulting personal damage or material damage will be accepted if the unit is used for other purposes than originally intended, if it is not correctly connected or operated, if it is over-loaded or not repaired in an expert way
(对于将灯具用做其他用途使用、或没有按照正确的说明连接或者操作、非专业人员私自拆开灯具等行为所造成的人身或物质伤害,本公司不承担任何责任).